

Inner bore <i>d</i> mm	Bearing number		Boundary dimensions					Basic load ratings		Limiting speeds		Weight kg.
			<i>D</i>	<i>C</i>	<i>r_s</i> mm	<i>d_i</i>	<i>B</i>	dynamic <i>C</i>	static <i>C₀</i>	grease rpm	oil	
10	LR 200 X-2RS	LR 200 2RS	32	9	0.6	15.4	-	4,200	2,050	13,000	-	0.050
12	LR 201 X-2RSR	LR 201 2RSR	35	10	0.6	17.1	-	5,500	2,600	15,000	-	0.050
15	LR 202 X-2RSR	LR 202 2RSR	40	11	0.6	20.0	-	6,700	3,150	14,000	-	0.070
17	LR 203 X-2RSR	LR 203 2RSR	47	12	0.6	22.5	-	9,100	4,200	11,000	-	0.110
20	LR 204 X-2RSR	LR 204 2RSR	52	14	1.0	26.5	-	11,800	5,400	10,000	-	0.150
25	LR 205 X-2RSR	LR 205 2RSR	62	15	1.0	30.3	-	14,900	6,800	9,000	-	0.230
30	LR 206 X-2RS	LR 206 2RS	72	16	1.0	37.4	-	20,800	9,200	5,500	-	0.330
35	LR 207 X-2RS	LR 207 2RS	80	17	1.1	42.4	-	26,100	11,400	4,500	-	0.400
45	LR 209 X-2RS	LR 209 2RS	90	19	1.1	53.2	-	30,300	13,100	3,600	-	0.450
12	LR 201 RRU	-	35	10	0.6	18.5	15.0	5,500	3,000	15,000	-	0.070
15	LR 202 RRU	-	40	11	0.6	21.5	14.4	6,700	3,500	14,000	-	0.080

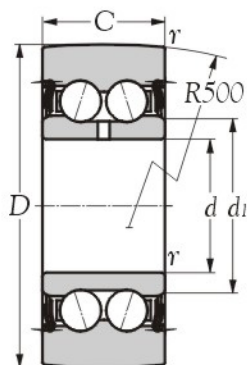
Note: 1) X: Cylindrical outside surface.

2) 2RS: Lip seals on both sides, giving axial sealing action.

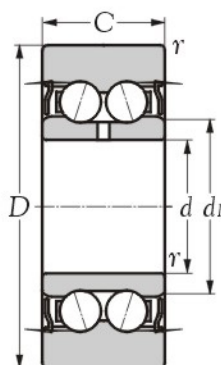
3) 2RSR: Lip seals on both sides, giving radial sealing action.

Technical supplement

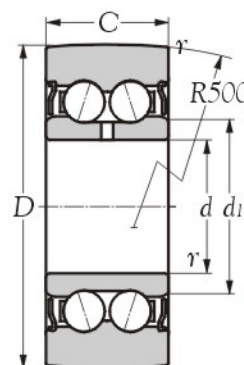
Cages	Precision	Grease
Steel - <input checked="" type="checkbox"/>		
Polymid - <input checked="" type="checkbox"/>		
Brass - <input checked="" type="checkbox"/>		
	Normal (ISO)	Shell Alvania S2



Type LR 52.2RS
(Light-contact, double seals)



Type LR 52.X-ZZ
(Double shields)




Type LR 52.ZZ
(Double shields)

Inner bore <i>d</i> mm	Bearing number		Boundary dimensions				Basic load ratings		Limiting speeds		Weight kg.
			<i>D</i>	<i>C</i>	<i>r_s</i>	<i>d₁</i>	dynamic <i>C</i> N	static <i>C₀</i>	grease rpm	oil rpm	
10	LR 5200 2RS	-	32	14.0	0.6	15.4	6500	3900	8000	-	0.070
12	LR 5201 2RS	-	35	15.9	0.6	17.1	8500	4900	7500	-	0.080
15	LR 5202 2RS	-	40	15.9	0.6	20.0	10100	5900	7000	-	0.110
17	LR 5203 2RS	-	47	17.5	0.6	22.5	13700	7800	5500	-	0.170
20	LR 5204 2RS	-	52	20.6	1.0	26.5	17700	10000	5000	-	0.230
25	LR 5205 2RS	-	62	20.6	1.0	30.3	22000	12400	4500	-	0.340
30	LR 5206 2RS	-	72	23.8	1.0	37.4	30700	20400	3500	-	0.510
35	LR 5207 2RS	-	80	27.0	1.1	42.4	39400	21300	2800	-	0.660
40	LR 5208 2RS	-	85	30.2	1.1	48.4	45500	24300	2500	-	0.750
10	LR 5200 X-ZZ	LR 5200 ZZ	32	14.0	0.6	15.4	6500	3900	11000	-	0.070
12	LR 5201 X-ZZ	LR 5201 ZZ	35	15.9	0.6	17.1	8500	4900	10000	-	0.080
15	LR 5202 X-ZZ	LR 5202 ZZ	40	15.9	0.6	20.0	10100	5900	10000	-	0.110
17	LR 5203 X-ZZ	LR 5203 ZZ	47	17.5	0.6	22.5	13700	7800	7500	-	0.170
20	LR 5204 X-ZZ	LR 5204 ZZ	52	20.6	1.0	26.5	17700	10000	7000	-	0.230
25	LR 5205 X-ZZ	LR 5205 ZZ	62	20.6	1.0	30.3	22000	12400	6500	-	0.340
30	LR 5206 X-ZZ	LR 5206 ZZ	72	23.8	1.0	37.4	30700	20400	5000	-	0.510
35	LR 5207 X-ZZ	LR 5207 ZZ	80	27.0	1.1	42.4	39400	21300	3900	-	0.660
40	LR 5208 X-ZZ	LR 5208 ZZ	85	30.2	1.1	48.4	45500	24300	3500	-	0.750

Note: 1) X: Cylindrical outside surface.
 2) 2RS: Lip seals on both sides, giving axial sealing action.
 3) ZZ: Sealing shields on both sides

Technical supplement



Cages

Steel - X

Polymid - ✓

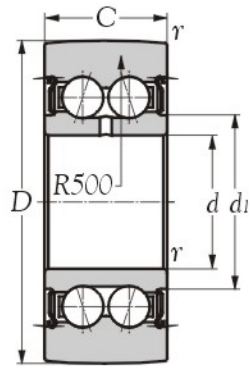
Brass - X

Precision

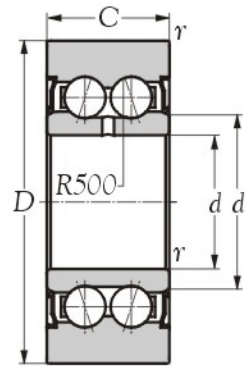
Normal (ISO)

Grease

Shell Alvania S2



Type LR 53..2RS
(Light-contact, double seals)



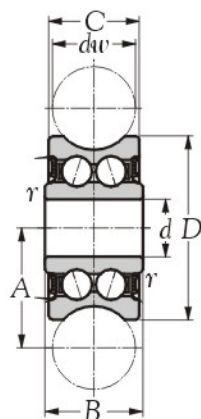
Type LR 53..2Z
(Double shields)

Inner bore <i>d</i> mm	Bearing number	Boundary dimensions				Basic load ratings		Limiting speeds		Weight kg(s).
		<i>D</i>	<i>C</i>	<i>r_s</i>	<i>d₁</i>	dynamic <i>C</i>	static <i>C₀</i>	grease rpm	oil	
17	LR 5303 2RS -	52	22.2	1.0	23.5	19300	10600	4700	-	0.210
20	LR 5304 2RS LR 5304 2Z	62	22.2	1.1	29.0	25100	13800	4500	-	0.340
25	LR 5305 2RS LR 5305 2Z	72	25.4	1.1	34.4	34300	18600	3900	-	0.500
30	LR 5306 2RS LR 5306 2Z	80	30.2	1.1	41.4	47200	25200	3100	-	0.670
35	LR 5307 2RS LR 5307 2Z	90	34.9	1.5	47.7	59800	31400	2500	-	0.970
40	LR 5308 2RS LR 5308 2Z	100	36.5	1.5	52.4	78000	39900	2300	-	1.200

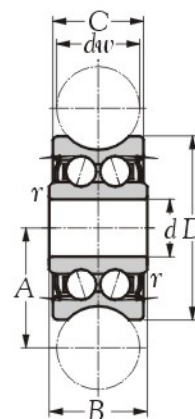
Note: 1) 2RS: Lip seals on both sides, giving axial sealing action.
2) 2Z: Sealing shields on both sides.

Technical supplement

	Cages	Precision	Grease
Steel -	X	Normal (ISO)	Shell Alvania S2
Polymid -	✓		
Brass -	X		



Type LFR..2RS
(Light-contact, double seals)



Type LFR..2Z
(Double shields)

Inner bore <i>d</i> mm	Bearing number		Boundary dimensions						Basic load ratings		Limiting speeds		Weight kg(s).
			<i>d_w</i>	<i>D</i>	<i>C</i>	<i>B</i>	<i>A</i>	<i>r_s</i>	dynamic <i>C</i> N	static <i>C₀</i> N	grease rpm	oil rpm	
4	LFR 50/4-4 2Z	LFR 50/4-4 2RS	4	13.0	6.0	7.0	7.55	0.2	1050	850	1150	1600	0.007
5	LFR 50/5-4 2Z	LFR 50/5-4 2RS	4	16.0	7.0	8.0	9.00	0.2	1200	860	1300	1780	0.009
5	LFR 50/5-6 2Z	LFR 50/5-6 2RS	6	17.0	7.0	8.0	10.50	0.2	1270	820	1300	1780	0.010
8	LFR 50/8-6 2Z	LFR 50/8-6 2RS	6	24.0	11.0	11.0	14.00	0.3	3670	2280	1300	4560	0.020
12	LFR 5201-10 2Z	LFR 5201-10 2RS	10	35.0	15.9	15.9	20.65	0.3	8500	5100	5100	10200	0.080
12	LFR 5301-10 2Z	LFR 5301-10 2RS	10	42.0	19.0	19.0	24.00	0.6	13000	7700	7500	14200	0.100
15	LFR 5302-10 2Z	LFR 5302-10 2RS	10	47.0	19.0	19.0	26.65	1.0	16200	9200	6200	18400	0.170
12	LFR 5201-12 2Z	LFR 5201-12 2RS	12	35.0	15.9	15.9	21.75	0.3	8400	5000	5100	10000	0.085
12	LFR 5201-14 2Z	LFR 5201-14 2RS	14	39.9	18.0	20.0	24.00	0.3	8900	5000	6700	12100	0.095
20	LFR 5204-16 2Z	LFR 5204-16 2RS	16	52.0	20.6	22.6	31.50	0.6	16800	9500	12100	16600	0.230
25	LFR 5206-20 2Z	LFR 5206-20 2RS	20	72.0	23.8	25.8	41.00	0.6	29500	16600	20700	33200	0.250
25	LFR 5206-25 2Z	LFR 5206-25 2RS	25	72.0	23.8	25.8	43.50	0.6	29200	16400	23100	32800	0.250
30	LFR 5207-30 2Z	LFR 5207-30 2RS	30	80.0	27.0	29.0	51.00	1.0	38000	20800	21400	36200	0.660
40	LFR 5208-40 2Z	LFR 5208-40 2RS	40	98.0	36.0	38.0	62.50	1.0	54800	29000	55000	58000	1.360
40	LFR 5308-50 2Z	LFR 5308-50 2RS	50	110.0	44.0	46.0	72.50	1.1	53000	39500	69000	79000	1.400

Remark: * Standard with lubrication hole on inner ring

1) 2Z: Sealing shields on both sides.

2) 2RS: Lip seals on both sides, giving axial sealing action.

Technical supplement

Cages **Precision** **Grease**

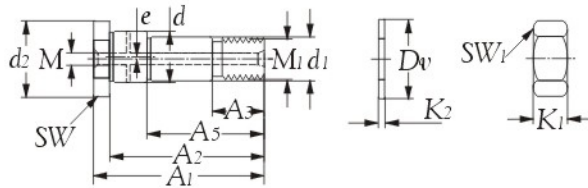
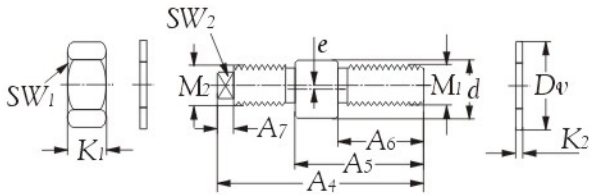
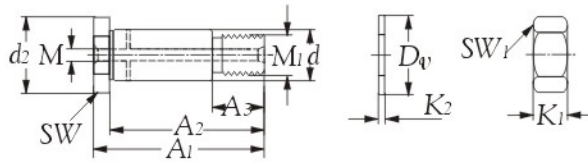
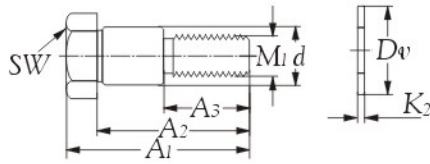
Steel - X

Polymid - ✓

Brass - X

Normal
(ISO)


Shell
Alvania S2



LFZ..., concentric bolts for track rollers LFR
LFE..., eccentric bolts for track roller LFR

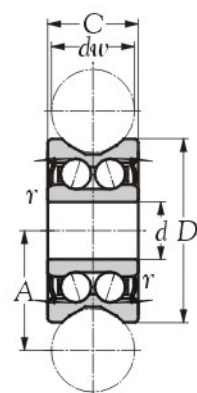
LFZ.. A1, concentric bolts for track rollers LFR
LFE.. A1, eccentric bolts for track roller LFR

Bearing number	Boundary dimensions																			Weight kg(s).
	A ₁	A ₂	A ₃	A ₄	A ₅	A ₆	A ₇ h ₀	d ₁	d ₂	M ₁ mm	M ₂	K ₁	K ₂	D _v	SW	SW ₁	SW ₂	e	M	
LFZ 5; LFE 5-05	19.5	16.0	9.5	20.5	15.0	9.0	-	-	-	M4	M4	2.9	-	-	3	7	2	0.50	-	0.010
LFZ 8; LFE 8-1	28.3	24.3	14.0	33.2	22.0	13.7	3.5	-	-	M8	M8x0.75	4.0	1.0	14	13	13	2	1.00	-	0.020
LFZ 12; LFE 12-1	43.0	36.0	22.0	50.0	33.5	19.5	5.0	-	-	M10	M10	8.0	1.8	21	17	17	5	1.00	-	0.040
LFZ 12/M12; LFE 12-1/M12	50.8	43.8	24.0	57.0	41.0	24.0	5.0	-	-	M12	M12	6.5	1.8	19	17	17	6	1.00	-	0.060
LFZ 15; LFE 15-1	50.8	43.8	26.0	57.0	41.0	24.0	5.0	-	-	M12	M12	6.5	1.8	21	19	19	6	1.00	-	0.060
LFZ 12x45 A1; LFE 12x45 A1	50.0	45.0	16.0	-	30.0	-	-	10	20	M10x1.5	-	8.0	2.0	21	17	17	6	0.75	5.9	0.040
LFZ 20x67 A1; LFE 20x67 A1	75.0	67.0	23.0	-	45.0	-	-	17	30	M16x1.5	-	13.0	3.0	30	27	24	-	1.00	5.9	0.200
LFZ 25x82 A1; LFE 25x82 A1	92.0	82.0	30.0	-	57.0	-	-	22	40	M20x1.5	-	16.0	3.0	37	36	30	-	1.00	5.9	0.400
LFZ 30x95 A1; LFE 30x95 A1	107.0	95.0	32.0	-	67.0	-	-	27	45	M24x1.5	-	19.0	4.0	44	41	36	-	1.00	5.9	0.620
LFZ 40x107 A1; LFE 40x107 A1	117.0	107.0	42.0	-	72.0	-	-	36	55	M30x1.5	-	24.0	4.0	56	46	46	-	1.00	5.9	1.100
LFZ 40x115 A1; LFE 40x115 A1	125.0	115.0	42.0	-	72.0	-	-	36	55	M30x1.5	-	24.0	4.0	56	46	46	-	1.00	5.9	1.200



Technical supplement

Cages	Precision	Grease
Steel - Nil	Normal (ISO)	Nil
Polymid - Nil		
Brass - Nil		



Inner bore <i>d</i> mm	Bearing number	Boundary dimensions					Basic load ratings		Limiting speeds		Weight kg.
		<i>d_w</i>	<i>D</i>	<i>C</i>	<i>A</i>	<i>r_s</i>	dynamic <i>C</i>	static <i>C₀</i>	grease rpm	oil rpm	
7	RV 20/7-10	10	22	11	14.50	0.3	2450	1620	2350	4150	0.017
8	RV 20/8-10	10	30	14	18.10	0.3	4490	2700	11000	19800	0.062
15	RV 202/15.38-10	10	38	17	22.25	0.5	7290	4550	10200	17900	0.086
15	RV 20/15.40-10	10	40	18	22.00	0.5	7950	4950	14500	26500	0.110
12	RV 20/11/12-20	20	41	20	28.00	0.3	8180	5100	17200	31500	0.130
15	RV 202/15.41-20	20	41	20	28.00	0.5	8180	5100	17200	31500	0.120
17	RV 203/17-20	20	58	25	35.00	0.5	16580	9200	47000	86000	0.325
20	RV 204/20.57-30	30	57	22	41.00	0.6	16910	9200	47000	86000	0.290
20	RV 204/20.58-30	30	58	25	41.00	0.6	16790	9200	40000	72000	0.310

Remark: * The unit contamination protection is provided by side shields 2Z.

Technical supplement

Cages

Steel - X

Polymid - ✓

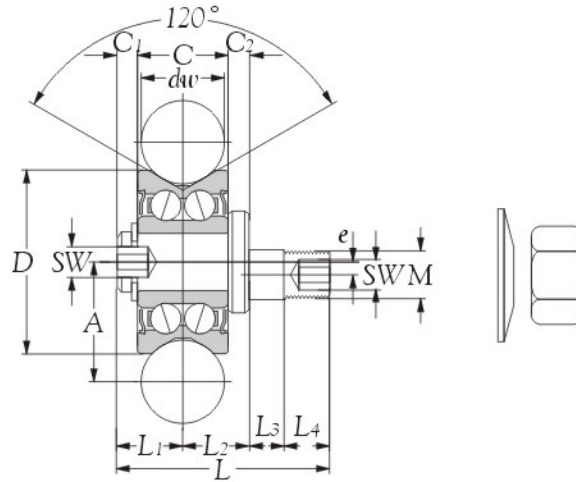
Brass - X

Precision

Class 0
(JIS)

Grease

Shell
Alvania S2



Inner bore <i>d</i> mm	Bearing number		Boundary dimensions													Basic load ratings		Limiting speeds		Weight kg.
	concentric	eccentric	<i>D</i>	<i>C</i>	<i>A</i>	<i>L</i>	<i>L</i> ₁	<i>L</i> ₂	<i>L</i> ₃	<i>L</i> ₄	<i>C</i> ₁	<i>C</i> ₂	<i>e</i>	SW	M	<i>C</i> N	<i>C</i> ₀	rpm	rpm	
10	RV 22 C	RV 22 E	22	11	14.5	26	8.5	8	4	5.5	3	3.0	1.5	3	M6	2450	1620	2350	4150	0.028
10	RV 30 C	RV 30 E	30	14	18.1	33	9.5	9	6	8.0	2	2.5	1.5	4	M8	4490	2700	11000	19800	0.069
10	RV 38 C	RV 38 E	38	17	22.3	42	11.0	11	8	12.0	3	2.5	2.0	5	M10	7290	4550	10200	17900	0.145
20	RV 41 C	RV 41 E	41	20	28.0	47	15.0	13	6	13.0	3	5.0	2.0	6	M12	8180	5100	17200	31500	0.190
20	RV 58 C	RV 58 E	58	25	35.0	59	17.0	19	11	13.0	6	4.0	2.5	6	M16	16580	9200	47000	86000	0.460

Remark: * Track rollers with integral studs are supplied with split washer and nut.

* The unit contamination protection is provided by side shields 2Z.

Technical supplement

Cages

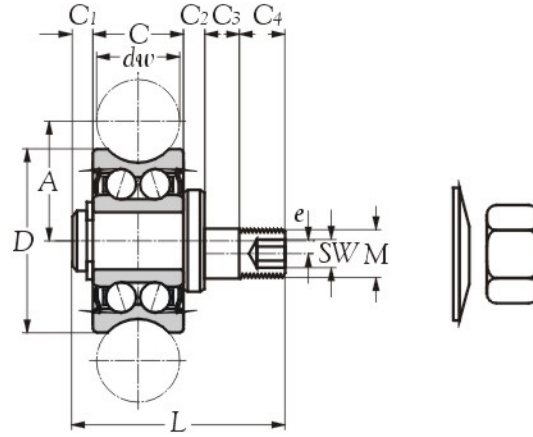
Steel -	Nil
Polymid -	Nil
Brass -	Nil

Precision

Normal
(ISO)


Grease

Nil



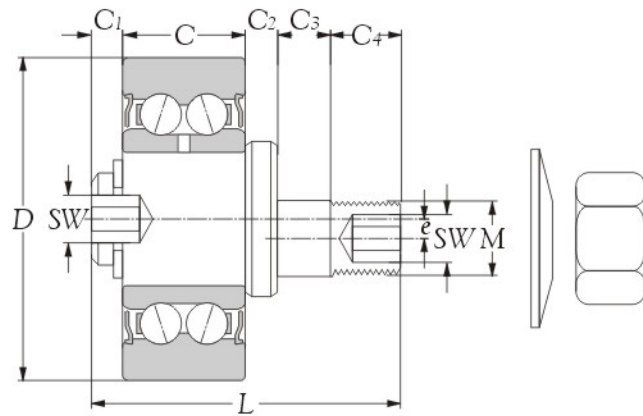
Inner bore <i>d</i> mm	Bearing number		Boundary dimensions											Basic load ratings		Limiting speeds		Weight kg.
	concentric	eccentric	<i>D</i>	<i>C</i>	<i>A</i>	<i>L</i>	<i>C</i> ₁	<i>C</i> ₂	<i>C</i> ₃	<i>C</i> ₄	<i>e</i>	SW	M	<i>C</i> N	<i>C</i> ₀	grease rpm	oil rpm	
6	RPC 17	RPE 17	17	7.0	10.50	23	1.5	1.5	5	5.5	0.50	2.5	M5	1250	850	1250	1700	0.015
6	RPC 24	RPE 24	24	11.0	14.00	29	3.0	2.0	6	7.0	0.50	4.0	M8	3500	2200	1250	4350	0.042
10	RPC 35	RPE 35	35	15.9	20.65	44	3.2	2.0	10	13.0	0.75	5.0	M10	8100	8100	4900	9700	0.120

Remark: * Track rollers with integral studs are supplied with split washer and nut.



Technical supplement

Cages	Precision	Grease
Steel - Nil	Normal (ISO)	Nil
Polymid - Nil		
Brass - Nil		



Bearing number	Boundary dimensions											Basic load ratings		Limiting speeds		Weight
	D	C	L	C ₁	C ₂	C ₃	C ₄	e	SW	M	dynamic C	static C ₀	grease	oil	kg.	
mm											N		rpm			
RA 35 A	35	15.9	42	2.1	5	6.0	13	1.0	5	M 12	8100	4900	4900	9700	0.150	
RA 52 A	52	22.2	57	3.3	8	9.5	14	1.5	6	M 16	16000	9100	11500	15800	0.345	

Remark: * Track rollers with integral studs are supplied with split washer and nut.

* The unit contamination protection is provided by side shields ZZ.

Technical supplement

Cages

Steel -	Nil
Polymid -	Nil
Brass -	Nil

Precision

Normal
(ISO)

Grease

Nil